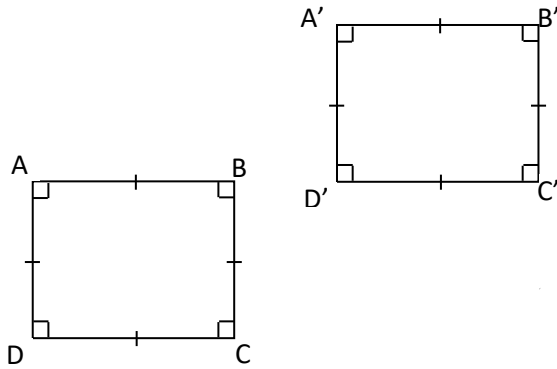


MATHS WORKSHEETS- GEOMETRY-TRANSFORMATIONS

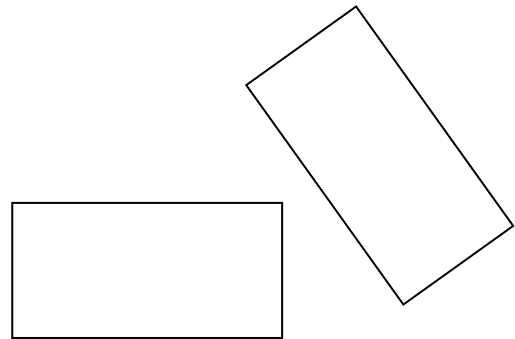
Name the transformation used in the following.

1.



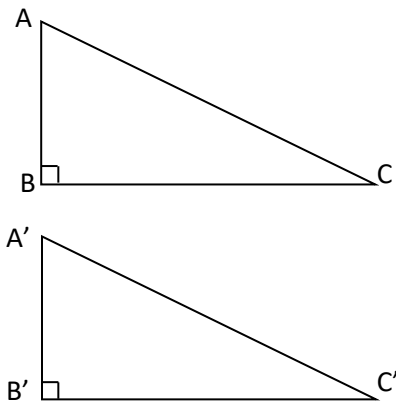
Answer:

2.



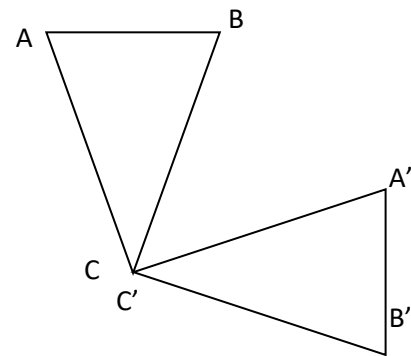
Answer:

3.



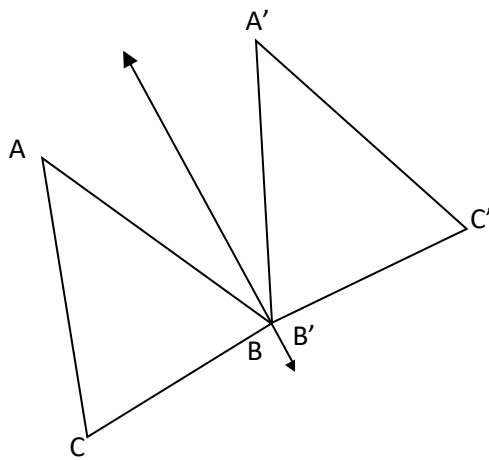
Answer:

4.



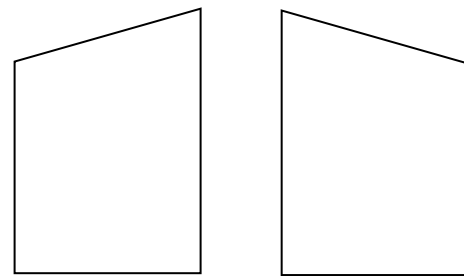
Answer:

5.



Answer:

6.



Answer:

Hint:

- Transformation occurs when a shape is moved from one position to another position.
- Types of transformation
 1. Translation: by sliding (moving in same direction & same amount)
 2. Rotation: by turning
 3. Reflection: by flipping

Answer Key:

1. Translation
2. Rotation
3. Translation
4. Rotation
5. Reflection
6. Reflection