

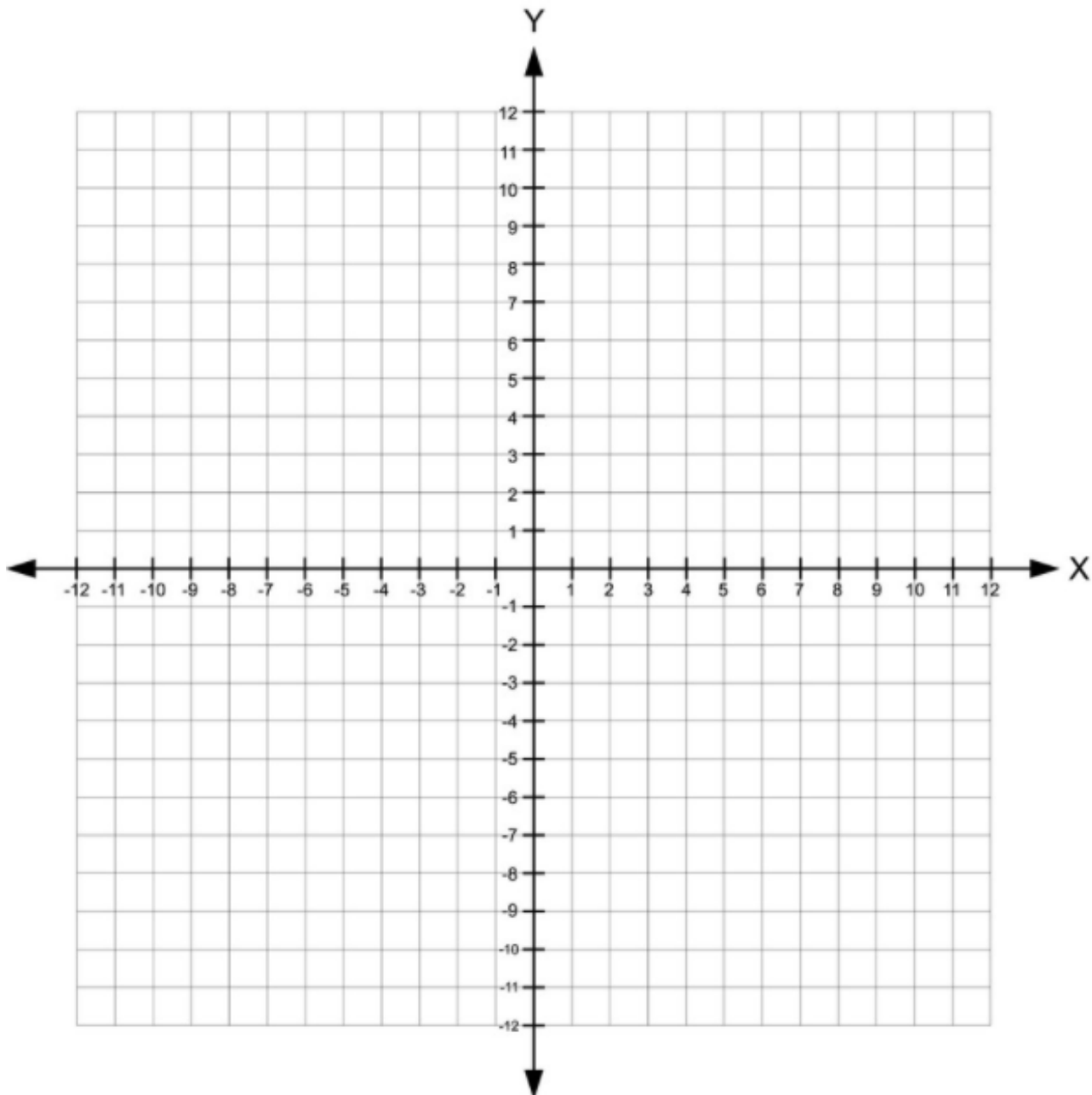
MATHS WORKSHEETS- ALGEBRA- GRAPH PARABOLAS IN THE PLANE

Given the following non-linear function, plot the coordinate points on the graph and draw the parabola.

1) $x^2 + 1 = y$

x							
y							

Ordered Pairs:

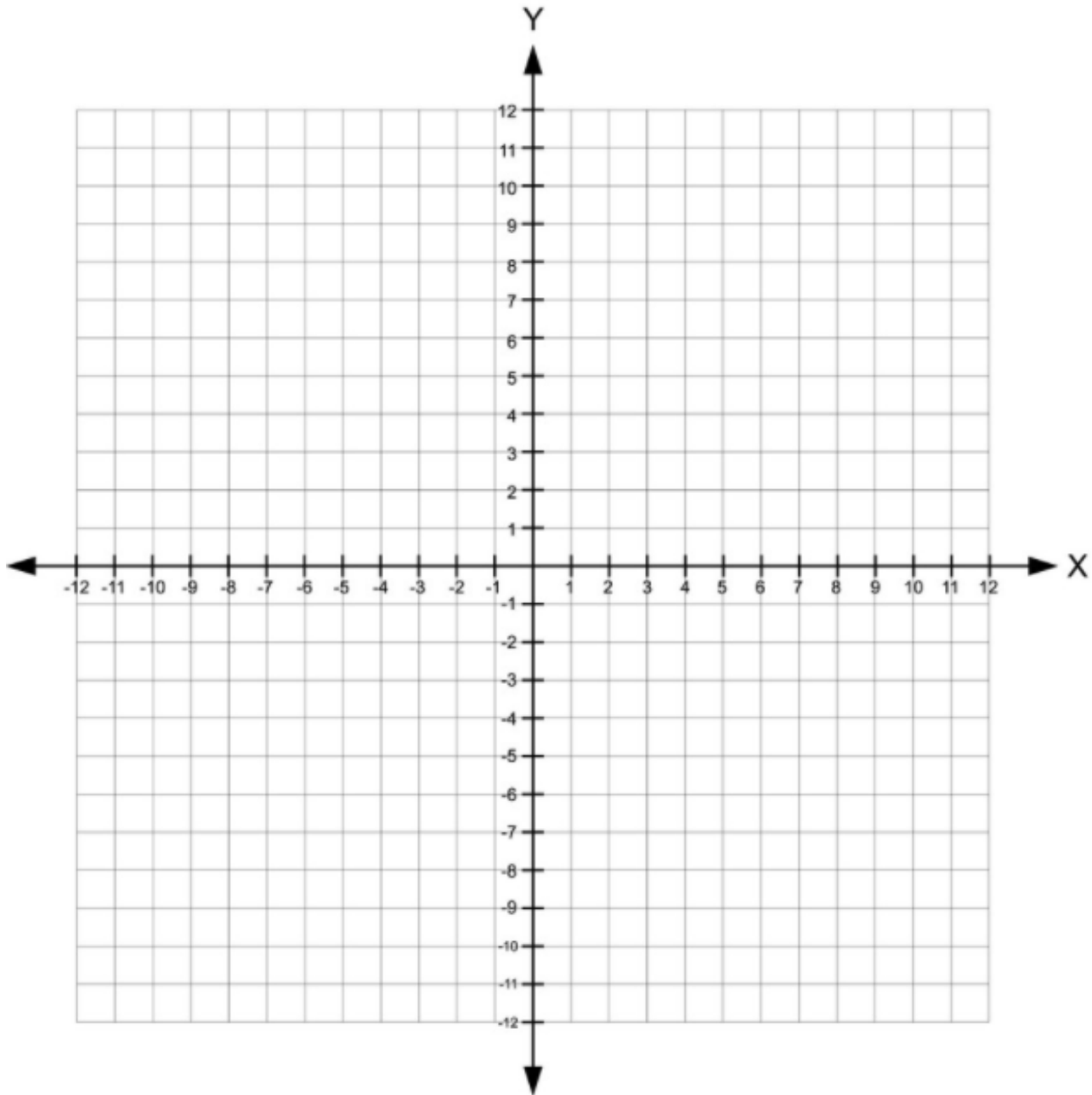


MATHS WORKSHEETS- ALGEBRA- GRAPH PARABOLAS IN THE PLANE

2) $y = x^2 - 3$

x							
y							

Ordered Pairs:

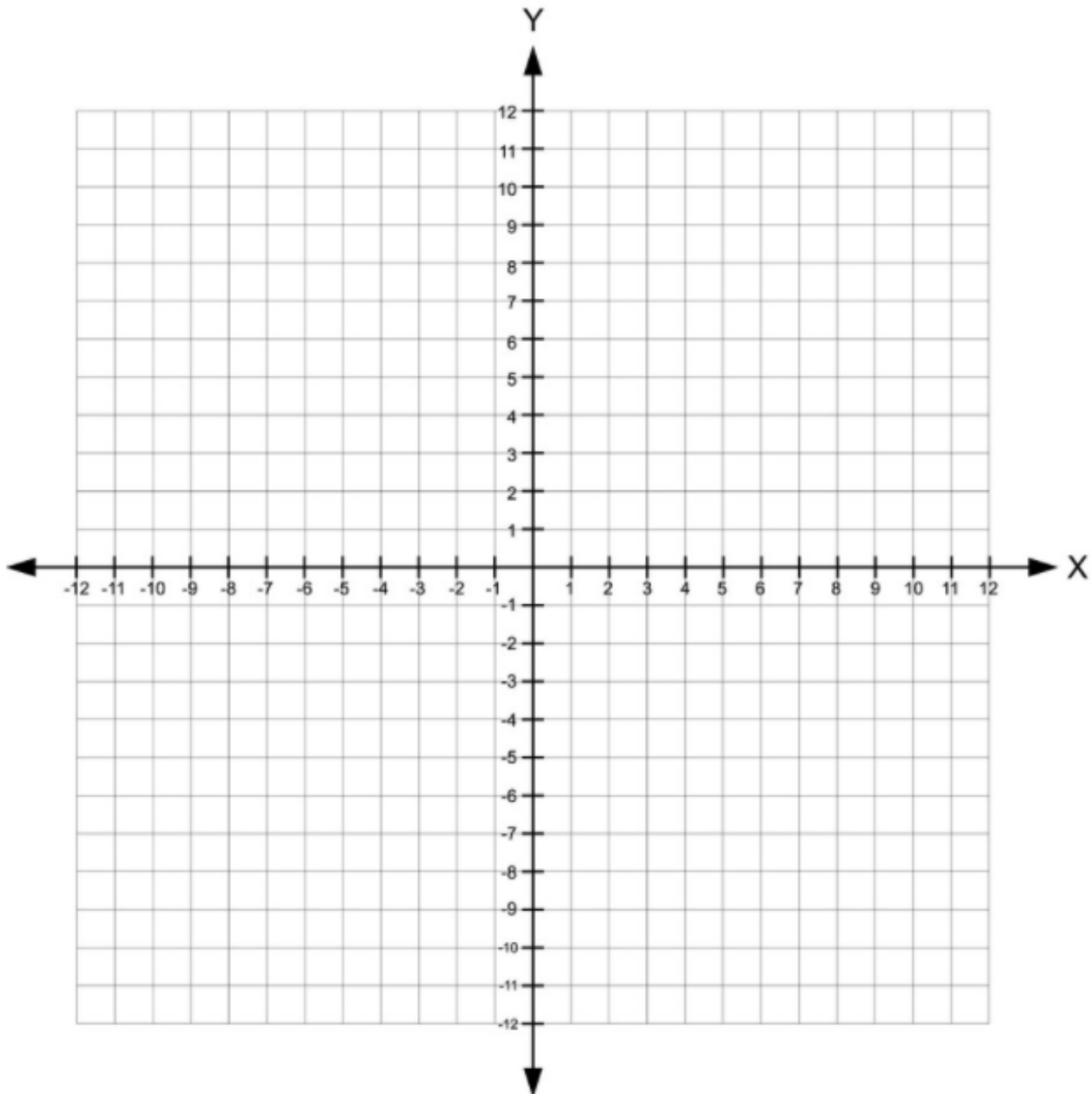


MATHS WORKSHEETS- ALGEBRA- GRAPH PARABOLAS IN THE PLANE

3) $y = x^2 - 4$

Ordered Pairs:

x							
y							

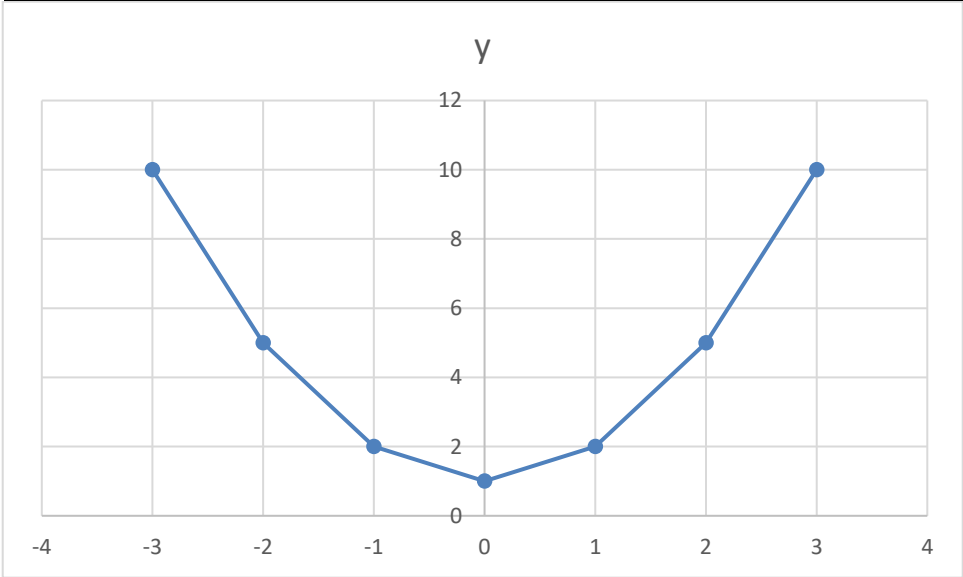


MATHS WORKSHEETS- ALGEBRA- GRAPH PARABOLAS IN THE PLANE

Answer Key:

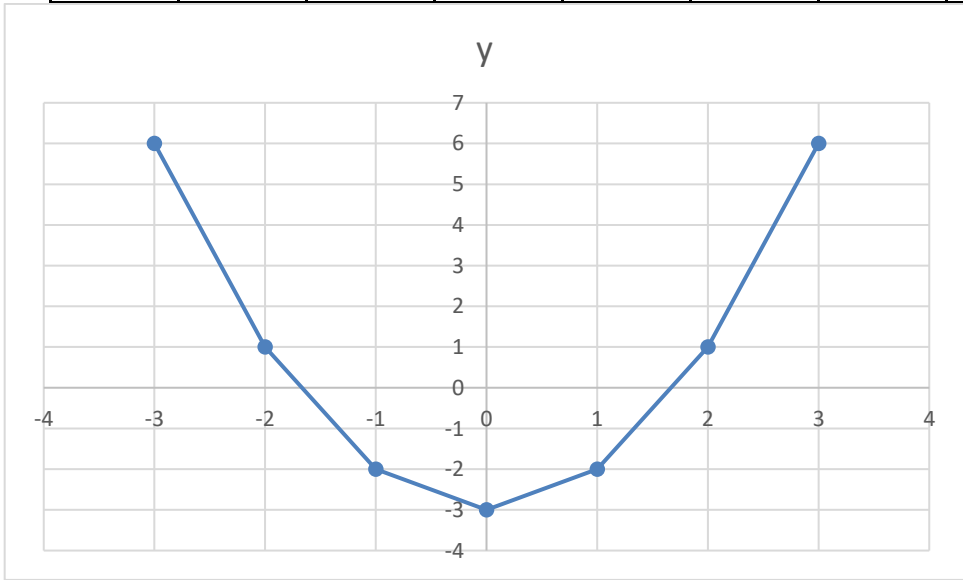
1) $x^2 + 1 = y$

x	-3	-2	-1	0	1	2	3
y	10	5	2	1	2	5	10



2) $y = x^2 - 3$

x	-3	-2	-1	0	1	2	3
y	6	1	-2	-3	-2	1	6



MATHS WORKSHEETS- ALGEBRA- GRAPH PARABOLAS IN THE PLANE

3) $y = x^2 - 4$

x	-3	-2	-1	0	1	2	3
y	5	0	-3	-4	-3	0	5

