

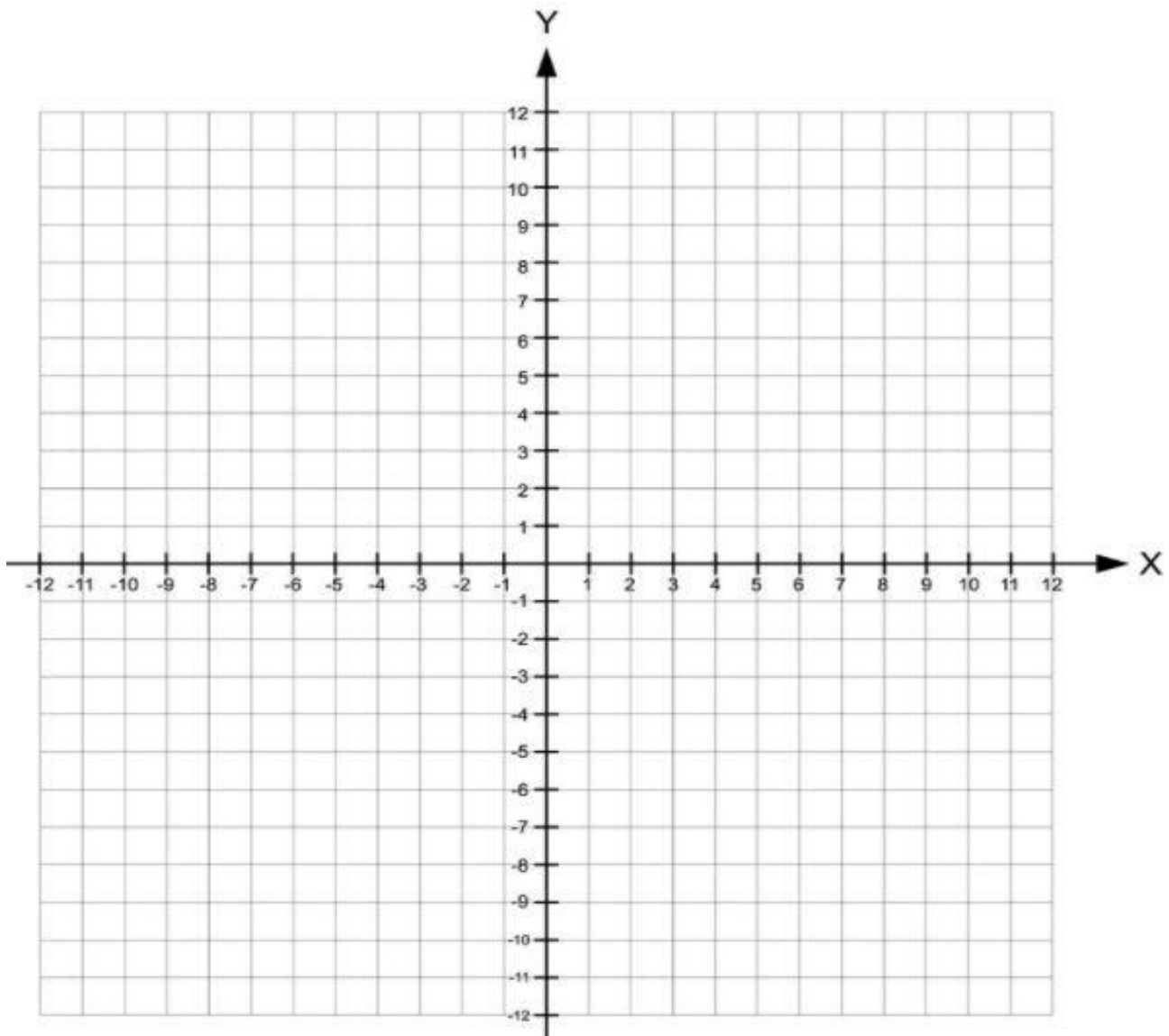
MATHS WORKSHEETS- ALGEBRA- GRAPH A LINE USING TABLE OF VALUES

Graph the equation of the line below using Table of values:

1) $y = 2x + 1$

x	-3	-2	-1	0	1	2	3
y							

Ordered Pairs:

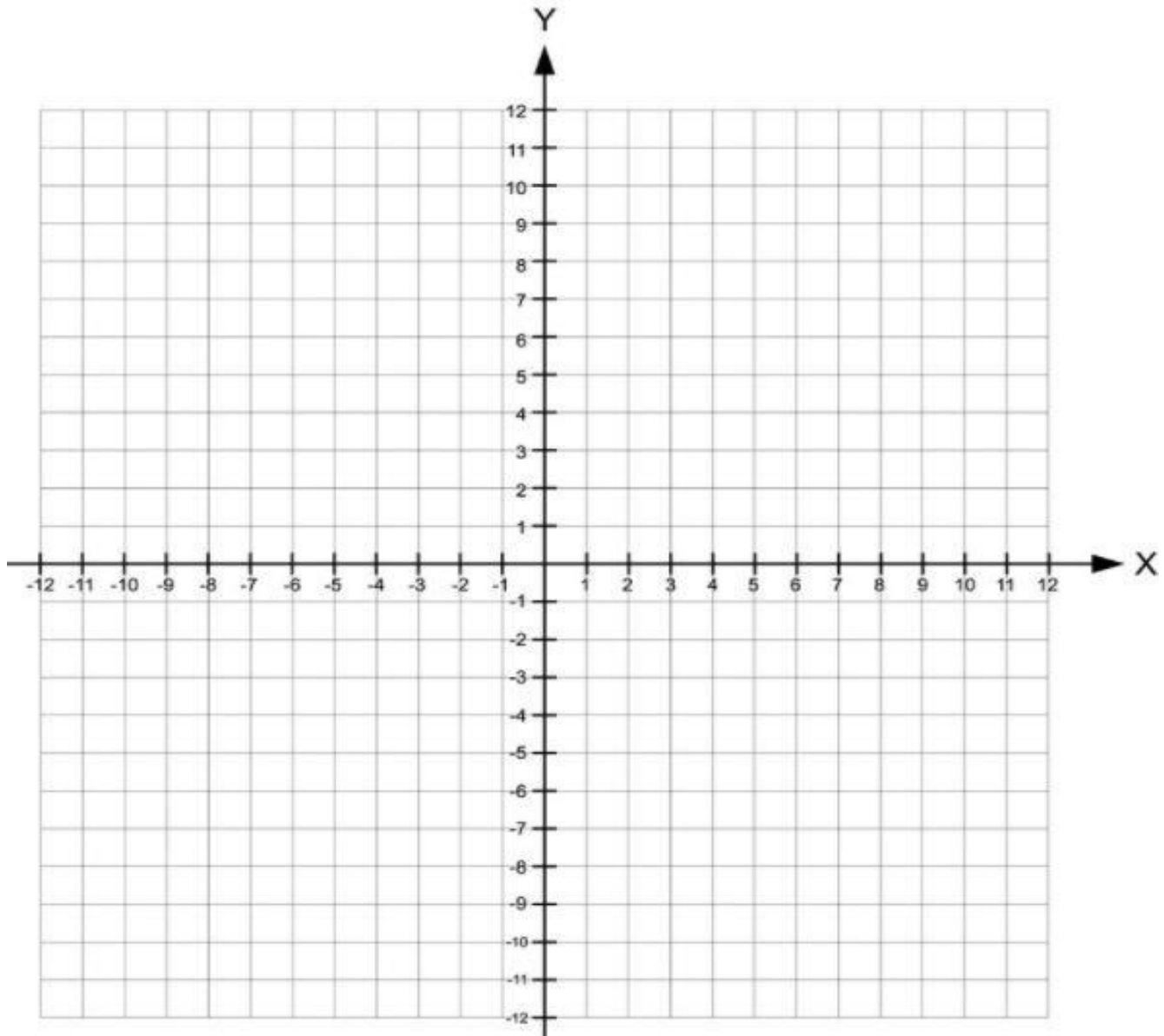


MATHS WORKSHEETS- ALGEBRA- GRAPH A LINE USING TABLE OF VALUES

2) $y = 3x - 2$

x	-3	-2	-1	0	1	2	3
y							

Ordered Pairs:



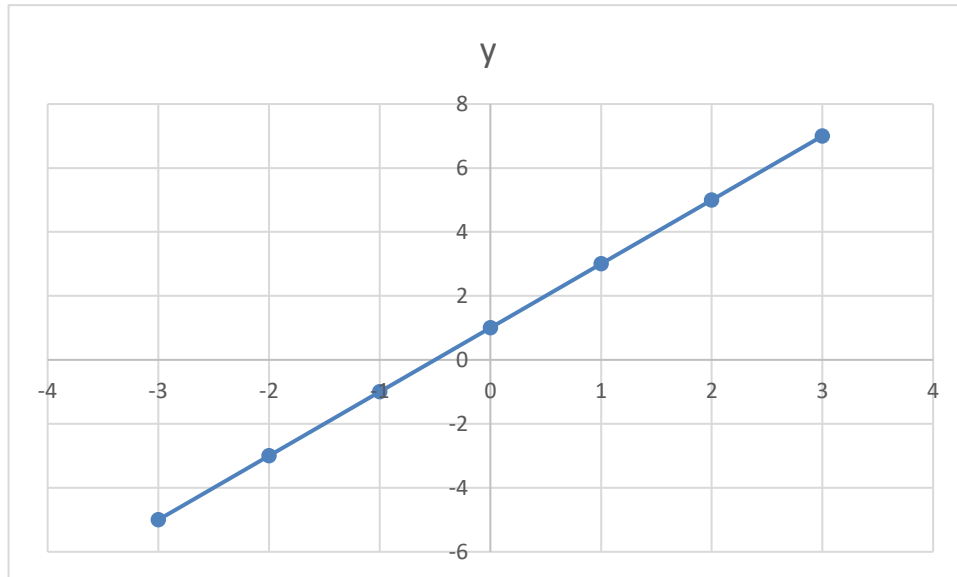
MATHS WORKSHEETS- ALGEBRA- GRAPH A LINE USING TABLE OF VALUES

Answer Key:

1)

x	-3	-2	-1	0	1	2	3
y	-5	-3	-1	1	3	5	7

Ordered Pairs: $(-3, -5), (-2, -3), (-1, -1), (0, 1), (1, 3), (2, 5), (3, 7)$



2)

x	-3	-2	-1	0	1	2	3
y	-11	-8	-5	-2	1	4	7

Ordered Pairs: $(-3, -11), (-2, -8), (-1, -5), (0, -2), (1, 1), (2, 4), (3, 7)$

